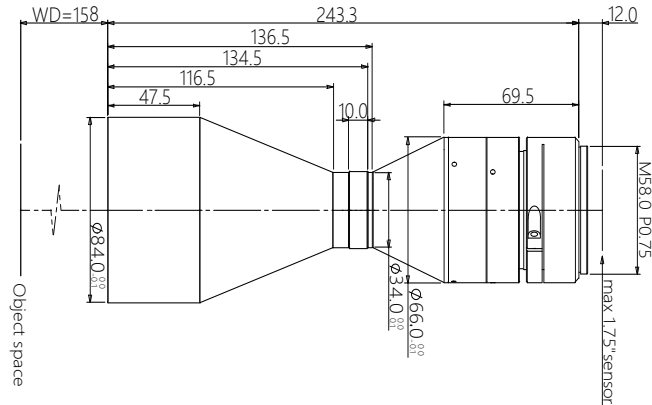




vision solution

# Specification

## SBS-SCJ158-0.453 High Resolution Double Telecentric Lens



### Features (SBS-SCJ series)

- \* Excellent double telecentric design for high resolution image result.
- \* Field of view is from 26mm to 300mm, suitable for most of application.
- \* Big Iris, low distortion, high parallel degree, big depth of view.
- \* Sensor size is available for 1/2.5" 1/2" 1/1.8" 2/3" 1" 4/3" 1.75" 2" Φ39 35mm full.

### Parameters

FOV (Dia.mm)	64
Mag.(x)	0.453
WD (mm)	158±3
Sensor size (Dia.mm)	29(1.75")
Image F#	8.5
Image MTF30(pl/mm)	>100
Object DOF (mm)	±3.1@F16
Object distortion (%)	<0.1
Object telecentric degree	<0.1
Object I/O(mm)	413±3

### Mechanical

Mount	M42/M48/M58
Total length (mm)	243.3
N.W(KG)	1.3

### Field of View (mm x mm)

1.75" CMV12000 (22.53x16.90)	49.7x37.3
1.75" PYTHON16k (18.43x18.43)	40.7x40.7
1.75" LineScan-4k (28.8mm)	63.6